



Linktropy™ 7500

Quick Start Guide

The Linktropy 7500 and Linktropy 7500 PRO WAN Emulators are managed through a browser-based GUI over an Ethernet connection to a dedicated management interface. Prior to operation, this management interface must be configured with appropriate network settings, either through the Linktropy GUI or through a command-line interface accessed via the serial console. For convenience, the management interface comes preconfigured with an IP address of 10.0.0.10, and the GUI is accessible from a directly-connected host on the 10.0.0.0/255.0.0.0 subnet.

Preparation

Management of the Linktropy WAN Emulator requires a PC running a supported web browser (Internet Explorer version 6 or later, or Mozilla Firefox). JavaScript must be enabled.

Initial configuration of the management interface requires either:

- a PC running a supported web browser that can be configured and placed on the 10.0.0.0/255.0.0.0 network.
- a PC with an RS-232 serial port running HyperTerminal or other terminal emulation software.

Locate the Linktropy CD in the shipping carton. The CD includes the following documentation:

- 📄 *Linktropy WAN Emulator User's Guide*
- 📄 *Linktropy 7500 Hardware Guide*
- 📄 *Linktropy 7500 Quick Start Guide*

Hardware Installation

The Linktropy 7500 series is designed for installation in a standard 19" rack. See the *Linktropy 7500 Hardware Guide* for rack-mount installation instructions.

Plug in a standard power cord (a U.S. power cord is supplied with the unit) into the socket on the back of the Linktropy 7500 and set the power switch to the ON (I) position. When powered on, the Power LED on the front panel will glow green. The system will be available for use within 60 seconds.

IP Address Configuration via the Linktropy GUI

To configure the management interface using the Linktropy GUI:

- 1 Configure a PC running a supported web browser with an IP address on the 10.0.0.0/255.0.0.0 subnet.
- 2 Connect an Ethernet cable between the PC and the MGMT port on the back of the Linktropy 7500.
- 3 Open the browser on the PC and enter `http://10.0.0.10` (the preconfigured management address) in the address bar. The Linktropy End User License Agreement will be displayed in a separate window.
- 4 Review the License Agreement. The Linktropy GUI will be displayed once the License Agreement is accepted.
- 5 The Linktropy GUI will open to the **Device Settings** tab. If desired, modify the IP address, netmask, and default gateway for the management interface. Click the *Apply Changes* button when done.

IP Address Configuration via the Serial Console

Using the provided RJ-45 to DB-9 cable, connect the serial port of a PC running HyperTerminal to the CONSOLE port of the Linktropy 7500. Set the serial port parameters to 9600 baud, 8 bits, no parity, 1 stop bit, and disable flow control. For more details on connecting to the serial console, see the *Linktropy 7500 Hardware Guide*.

Press [ENTER] to display a login prompt. At the prompt, log in as “admin”. There is no password.

```
linktropy login: admin
```

Use the following commands to set the IP address, IP netmask, and default gateway of the Linktropy 7500 management interface:

```
mgmt set addr <interface-ip-address> netmask <ip-netmask>
mgmt set gw <default-gateway>
```

IP addresses and netmasks are entered in dotted-decimal format. For example:


```
linktropy> mgmt set addr 192.168.1.1 netmask 255.255.255.0
```

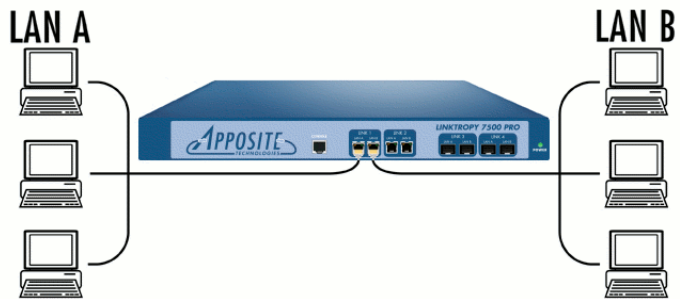
- 6 Once the management interface has been configured, use the Ethernet cable to connect the MGMT port to the management network.

Operation

Install the Linktropy 7500 between two LAN segments using one of the four pairs of Ethernet ports labeled LAN A and LAN B on the front of the Linktropy 7500. By default, the Linktropy 7500 acts as a bridge between the Ethernet segments connected to each pair of ports. Frames received on one port are subjected to the emulated WAN conditions before being forwarded to the opposite port.

Each pair of LAN A and LAN B ports is used to emulate a separate WAN link. All 4 links are configured separately and the device may act as a bridge or router independently for each link. On the Linktropy 7500, only one selected link may actively provide emulation at a time. On the Linktropy 7500 PRO, all 4 links may be active simultaneously.

Emulation conditions for each WAN link are configured separately in the Linktropy GUI. To set the emulation parameters, use a web browser to connect to the Linktropy GUI at the configured management address and select the desired link from the radio buttons at the top of the window. All emulation parameters are found on the **Link Emulation** tab. Emulation is disabled for each link until the red “Emulation On/Off” button at the top of the screen is pressed. See the *User’s Guide* for details on Linktropy emulation parameters or click the  buttons on the GUI for information on specific parameters.



Registration

For access to firmware upgrades, documentation, and other support materials, register your unit on-line at: <http://www.apposite-tech.com/register.html>.